

LIVING THE LIGHT OF JOY



Colleen Benelli

Usui/Tibetan Karuna® Reiki Master Teacher

A Reiki Craft Project™

Fairy Regalia

© 2009



As seen in Reiki News Magazine, Fall 2009
Colleen Benelli with Therese Fisher
contact Therese at: www.reikiweaver.com

Supplies



Dress form
Silk flowers
Wire – the weight of the wire depends on the size of the wings. It needs to be sturdy.
Thin wire
Wire cutters, scissors, duct tape
Paper
Matte gel medium, paint brush,
Bowl of water



Dress form to desired size



Cut wire into a rounded triangle shape.



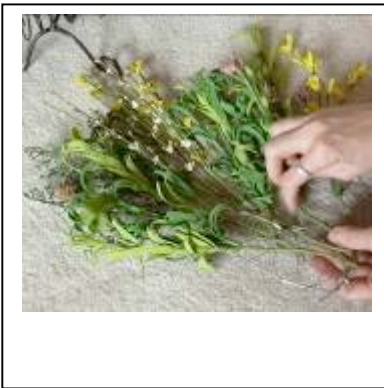
Secure together at the ends.



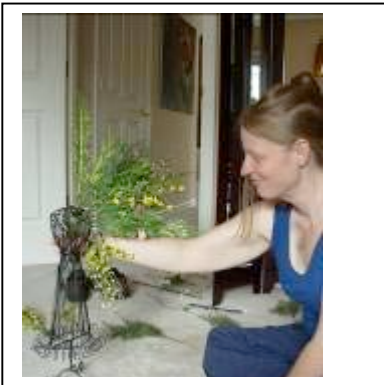
Wrap thin wire in criss-cross lines through and around the wire. This all gets covered so don't worry about the looks.



Weave the silk flowers through the wire.



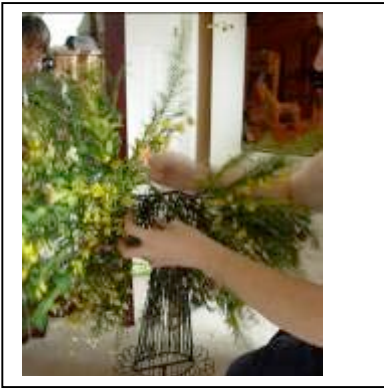
Continue weaving the flowers through the wire until it is as full as you like.



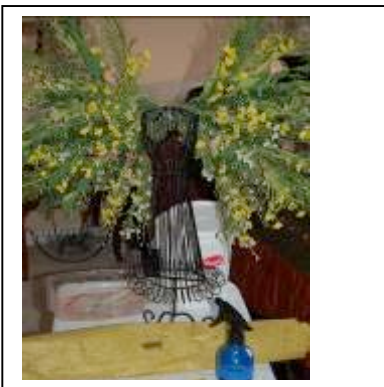
Measure the wing with the dress form as you go.



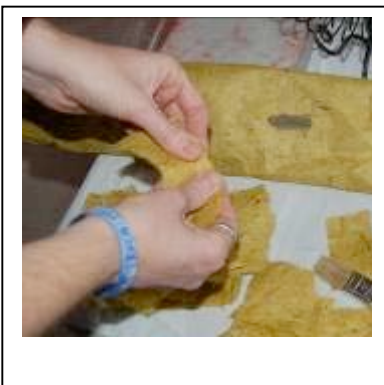
Make both wings at the same time to ensure they are uniform.



Attach the wings to the body of the dress form with wire. Again, this will get covered so it doesn't have to be neat.



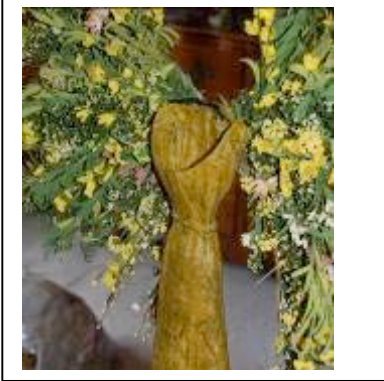
Gather the materials for the body. Paper, matte medium, water, a paint brush, and a bowl of water.



Tear paper into small strips and wet with water and a spray bottle.



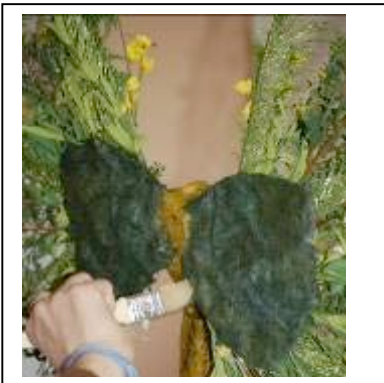
Dip your paint brush in the matte medium and paint the paper onto the dress form.



Cover entire body with paper.



Now it is time to cover the back of the wings with paper.



Brush on paper in a contrasting color.

Your Fairy Grandmothers



dress is ready for her to wear!

Thanks Therese! We had a lot of

Contact Therese at
www.Reikiweaver.com



fun!